

Welcome to “Keeping in Touch”

Housekeeping

- Put your microphone on mute
- If you need to take a break, just step away
- If you have a question or comment, type it into the chat function
- Questions – taken at the end
- If you have an FRS Radio Manual, have it ready to use
- This presentation is available on the ADAPT website.

Methods of “Communicating”

- ✦ Voice
- ✦ Phone
- ✦ Radio

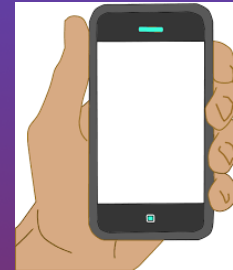


VOICE

- * Check yourself
- * Check your family
- * Check your immediate neighbors

YELLING is acceptable

PHONE



- ✱ If/when possible, make your Out-of-Area status call
- ✱ Your best bet is on a land line...
- ✱ Texting may also work, even if voice does not
- ✱ **Don't forget to have extra battery AND an automobile charger for cell phone**

RADIO



- * Citizen Band
- * Family Radio Service
- * General Mobile Radio Service
- * Amateur Radio

Citizen Band

Also known as CB, good buddy



Pro: **No** License required

More range than FRS (for mobile mount radios)
(5 miles for mobile; 3 miles for hand-held)

More frequencies than FRS (40-channels)

Con: Can have interference from out-of-area stations

Limited range for hand held radios

Requires batteries

Family Radio Service

Commonly referred to as FRS

Pro: **No** license required
Simple to operate

Con: Limited in range, low power ($\frac{1}{2}$ or 2 Watt)
Limited frequencies available (14-channels)
May be overloaded in a disaster

Requires batteries



General Mobile Radio Service

Commonly known as GMRS



Pro: Simple to operate

More range than FRS

Some channels will talk to FRS

Repeaters to greatly extend range

Up to 5 Watts on some hand-helds

Con: Commercial **License required** (\$60.00-80.00)

Limited frequencies available (8-channels)

Requires batteries

Amateur Radio

Commonly called HAM Radio

I am not allowed to tell you what HAM stands for



- Pro:
- Almost unlimited frequencies
 - High Power, up to 1500 watts
 - Established system for emergency communications (ARES & Blackberry REACT est: 1972)
 - Repeaters to greatly extend range
 - Some have around the world range

- Con:
- Test for **License required** (\$6.00–50.00)
 - Requires batteries** or **backup power**



NOW WHAT???

Here are some suggestions for a next step:

- * Take time to contemplate how involved to get into communications
- * Check your garage for that old CB radio gathering dust
- * Purchase a pair of FRS radio—good to use today with family
- * Purchase a GMRS license (www.fcc.gov)
- * Sign up for a “CRAM/EXAM” to obtain your amateur radio license
- * Sign up now for Ham 101, **102**, 201, and 202—it will give you a goal
- * Copy the next slide for equipment suggestions

EQUIPMENT SUGGESTIONS

Nothing below is endorse. It is suggested from experience.

CB Radio: There are several good brands. Cobra, Uniden, Midland

FRS: Suggested is Midland 50

GMRS: ICOM mobile F-221

Amateur Radio: Yaesu FT-60/65 hand-held/FT-8900 mobile

Antenna for mobile: Diamond dual band magnetic mount or X-50 for home

Power Supply for mobil at home: PowerWerx 30 Amp

Scanner: Bearcat BC 125AT

Battery: Too many options. Do you own research. (Amazon or Batteries-R-Us)

Check out complete list of suggestions at the ADAPT website

www.getreadyatherton.org/radios

WOW

THANK YOU

WE ARE HERE TO ASSIST

Thank you for your time and attention. Questions, comments, other ideas or additional suggestions are always welcomed.

Menlo Fire Protection District CERT radio Net happens every Monday
At 6:30pm (1830) on 440.600 + 91.5 and at approximately 6:40pm (1840)
on 147.555 simplex 114.8

You may listen on a scanner or a radio. You do not then need the tone to hear
Ham operators are very friendly, so if/when you get your license, we are here
to assist you...you need not go "On the air" alone for your first time.

kf6rfq@arrl.net

<https://www.getreadyatherton.org/>

WE ARE HERE TO ASSIST

<https://www.getreadyatherton.org/>

For amateur radio licensing information:

<https://sbcares.org/testing-training/>

kf6rfq@arrl.net